



Ugu District Municipality

***Together Working To Ensure
An Effective And Efficient Service Delivery***

UGU DISTRICT MUNICIPALITY

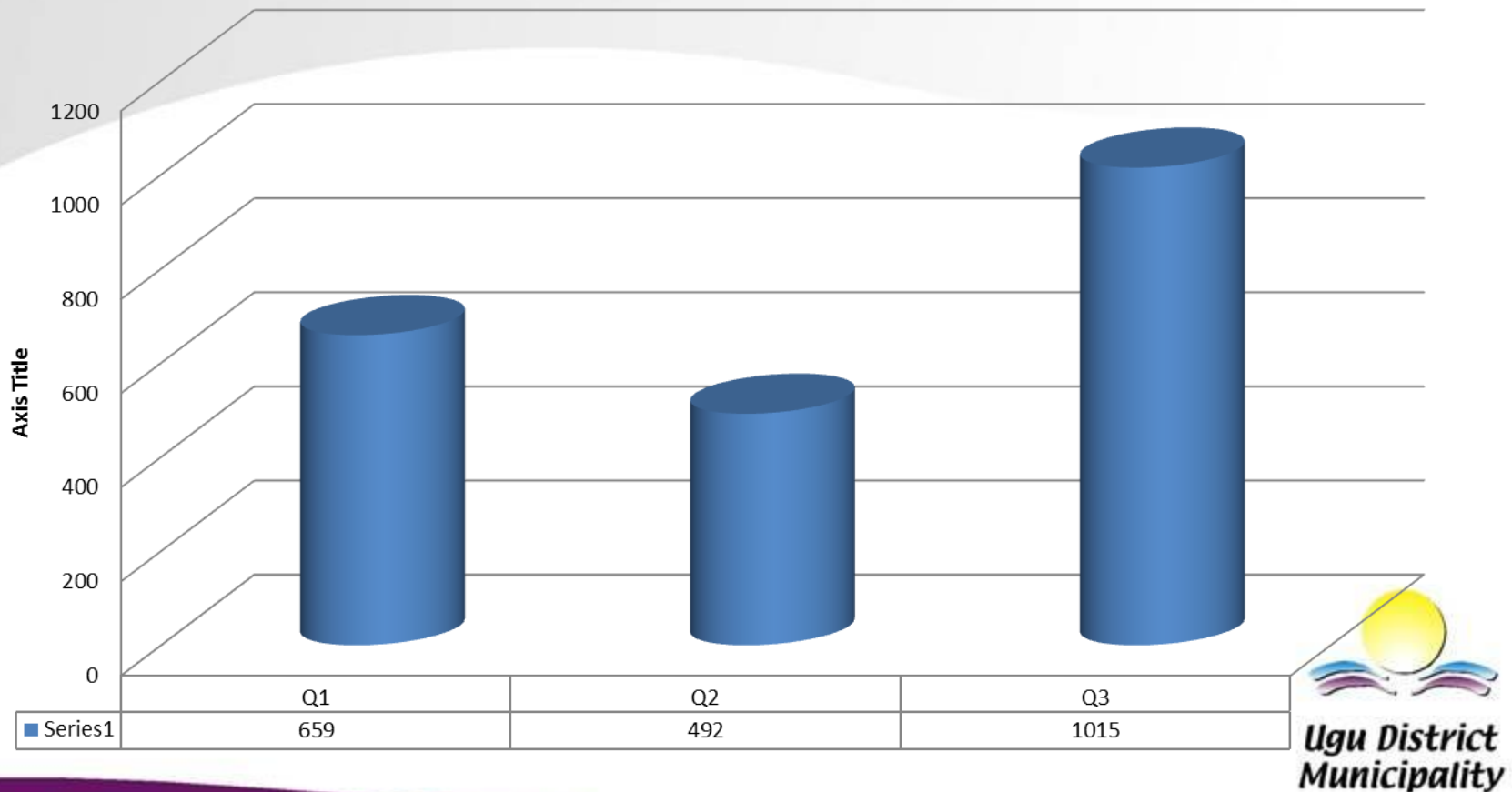
PRESENTATION TO THE PROVINCIAL COUNCIL ON AIDS

**PRESENTED BY
CLLR NH GUMEDE
MAYOR: UGU DISTRICT MUNICIPALITY
11 MARCH 2015**



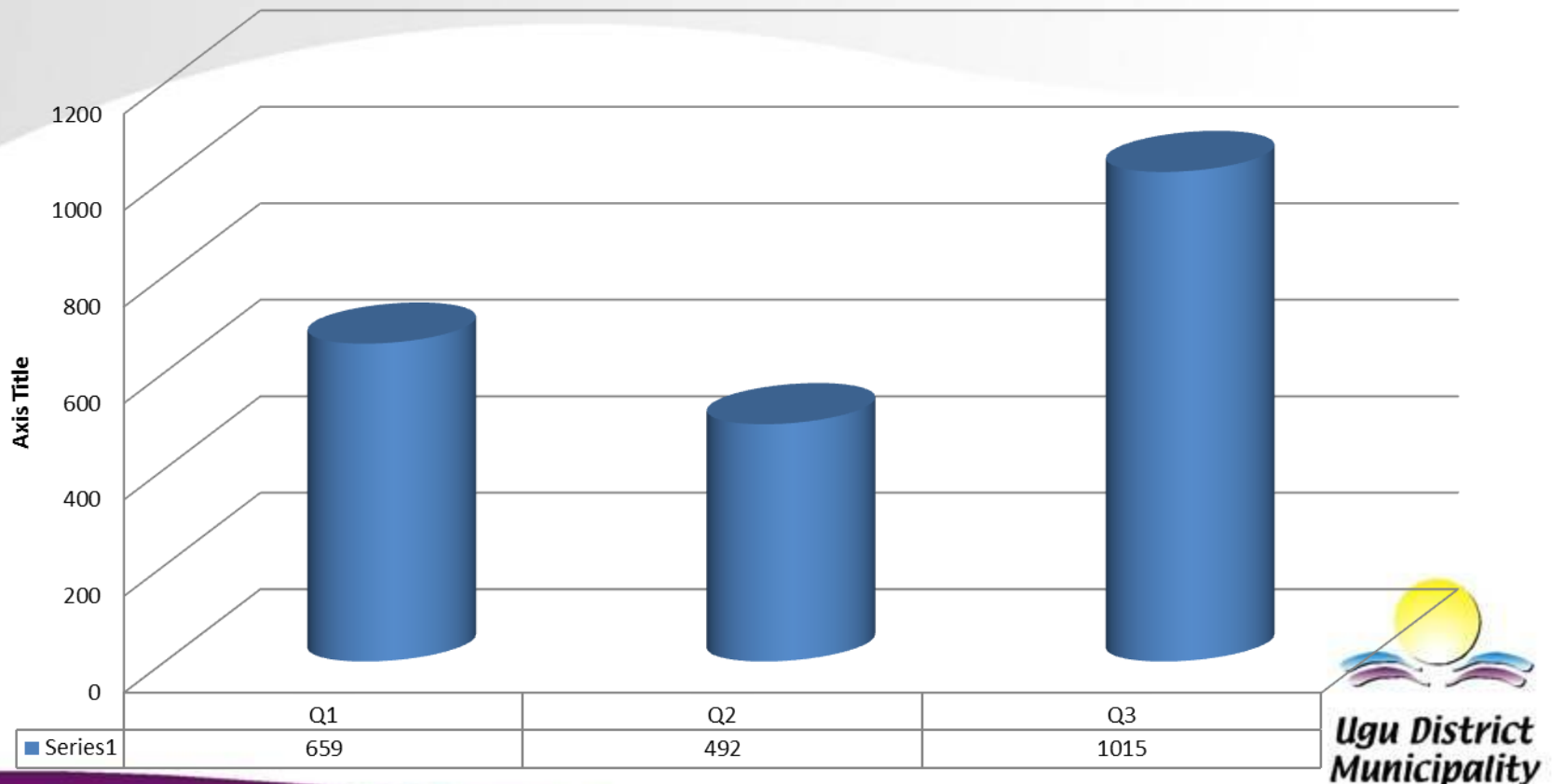
ORPHANS AND VULNERABLE CHILDREN

Number of registered OVC



ORPHANS AND OTHER VULNERABLE CHILDREN

Number of registered OVC receiving care and support

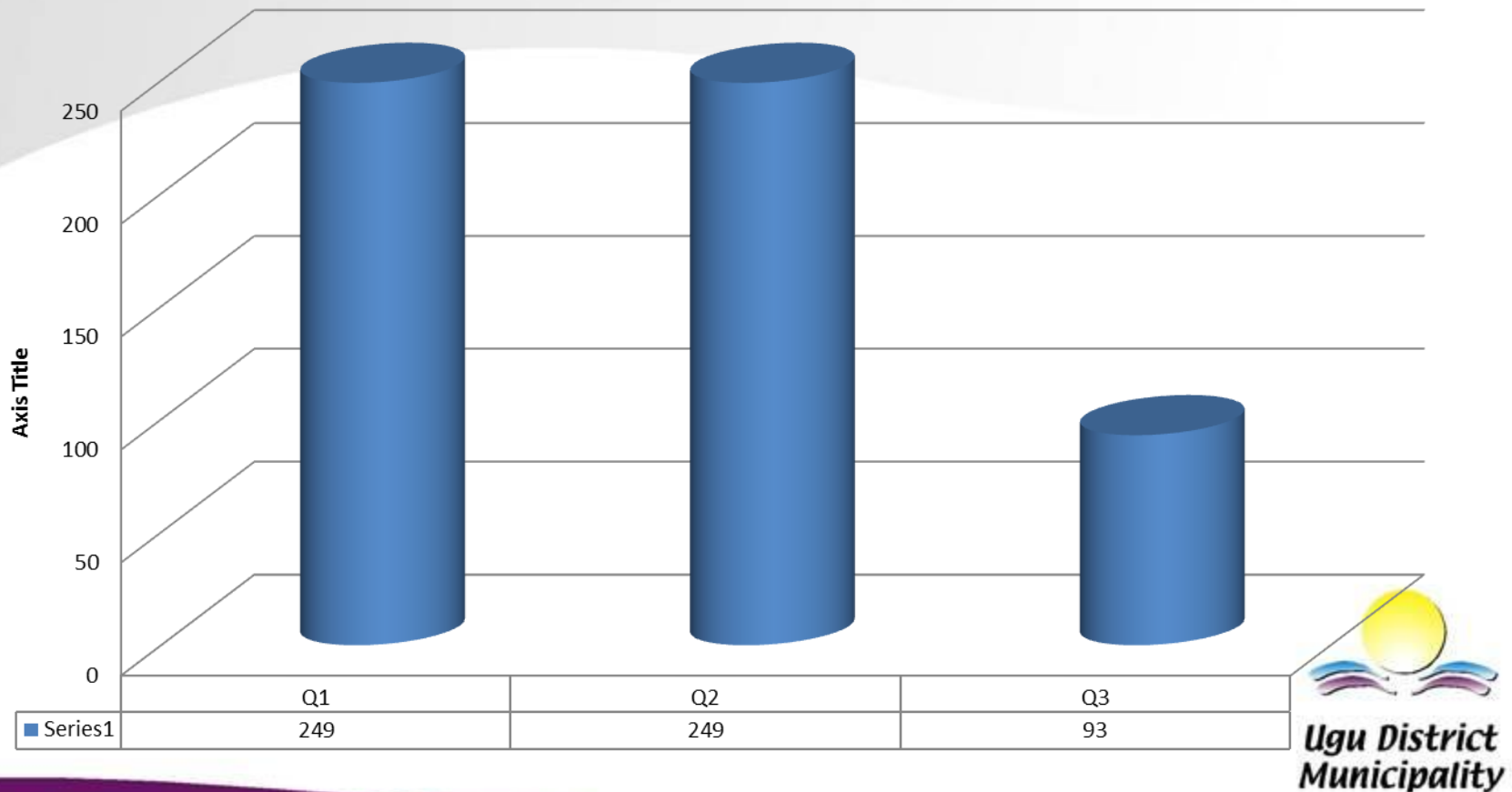


COMMENT

Not all OVCs identified require services from Social Development. Some OVCs are being referred to relevant departments. e.g. SASSA-grants applications, cancellations etc., Home Affairs cases are investigated by DSD. That how OVCs are receiving care and support.

LIFE SKILLS

Number of leaners pregnant

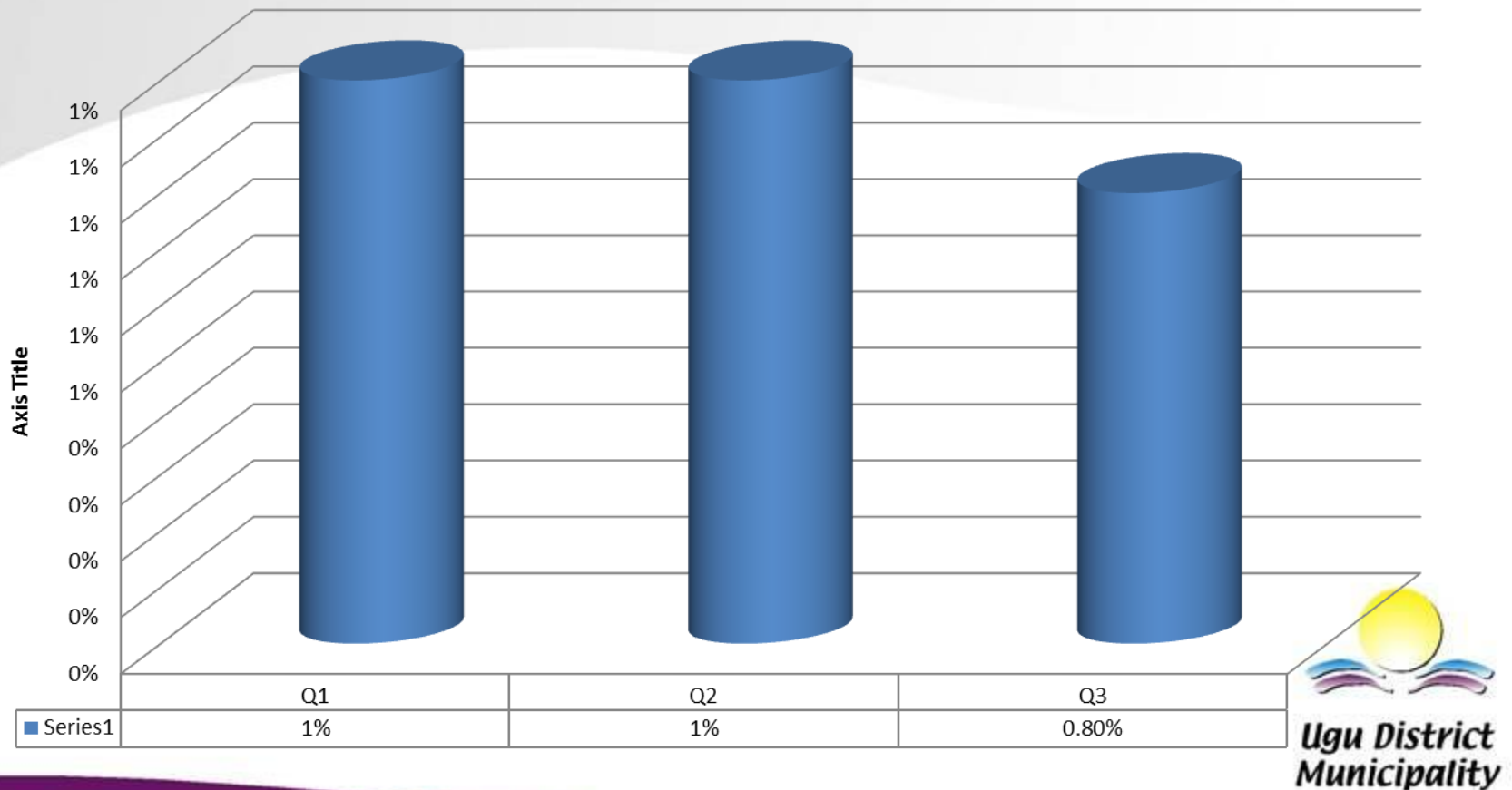


COMMENTS

- There has been a remarkable decline of learners that were pregnant during the reporting quarter
- Peer education programme conducted in high schools
- Working hand in hand with red cross and love life in conducting awareness programmes
- Learner support agents in schools dealing directly with issues of learner pregnancies

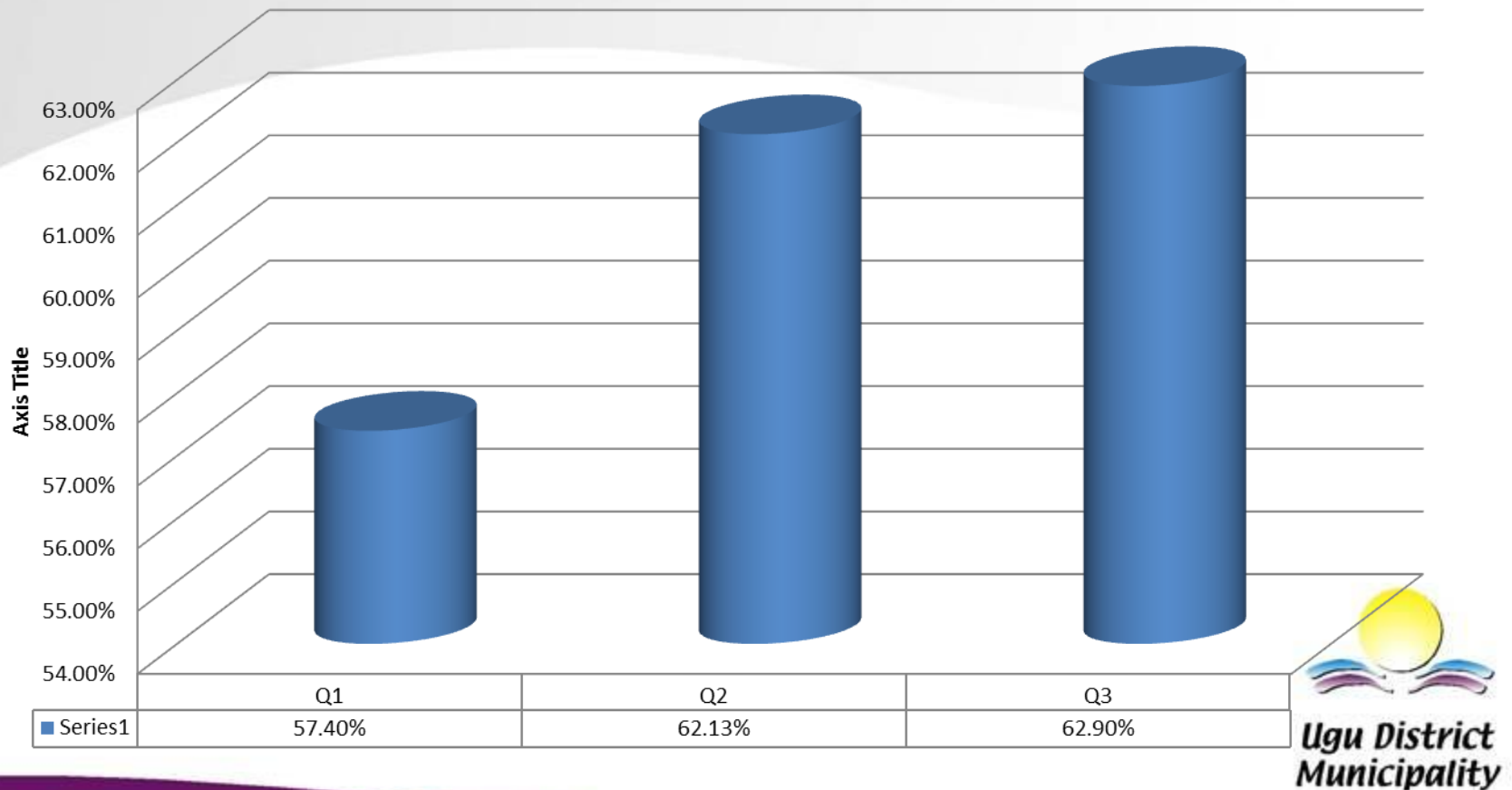
PMTCT

Baby antibody HIV test positive at around 18 weeks rate



PMTCT

ANC booking before 20 weeks rate

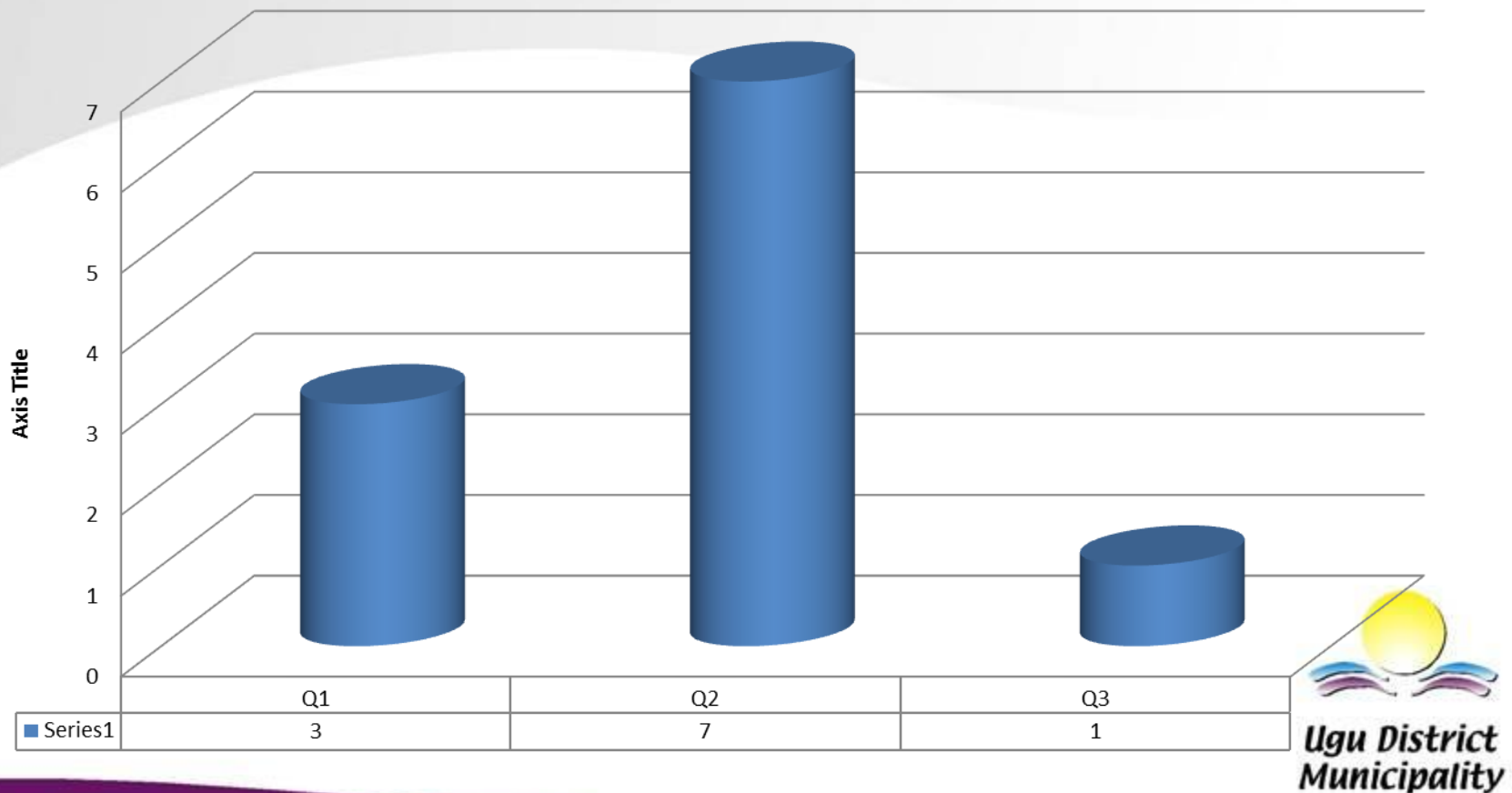


COMMENTS

- The district has improved under this programme
- There has been some improvement on ANC booking before 20 weeks rate as the target of 60% has been continuously maintained
- OSS Structures have been involved in informing the community about the early booking system and the 2014/2015 new PMTCT guidelines

MATERNAL CHILD & WOMEN'S HEALTH

Number of maternal deaths in public health facilities

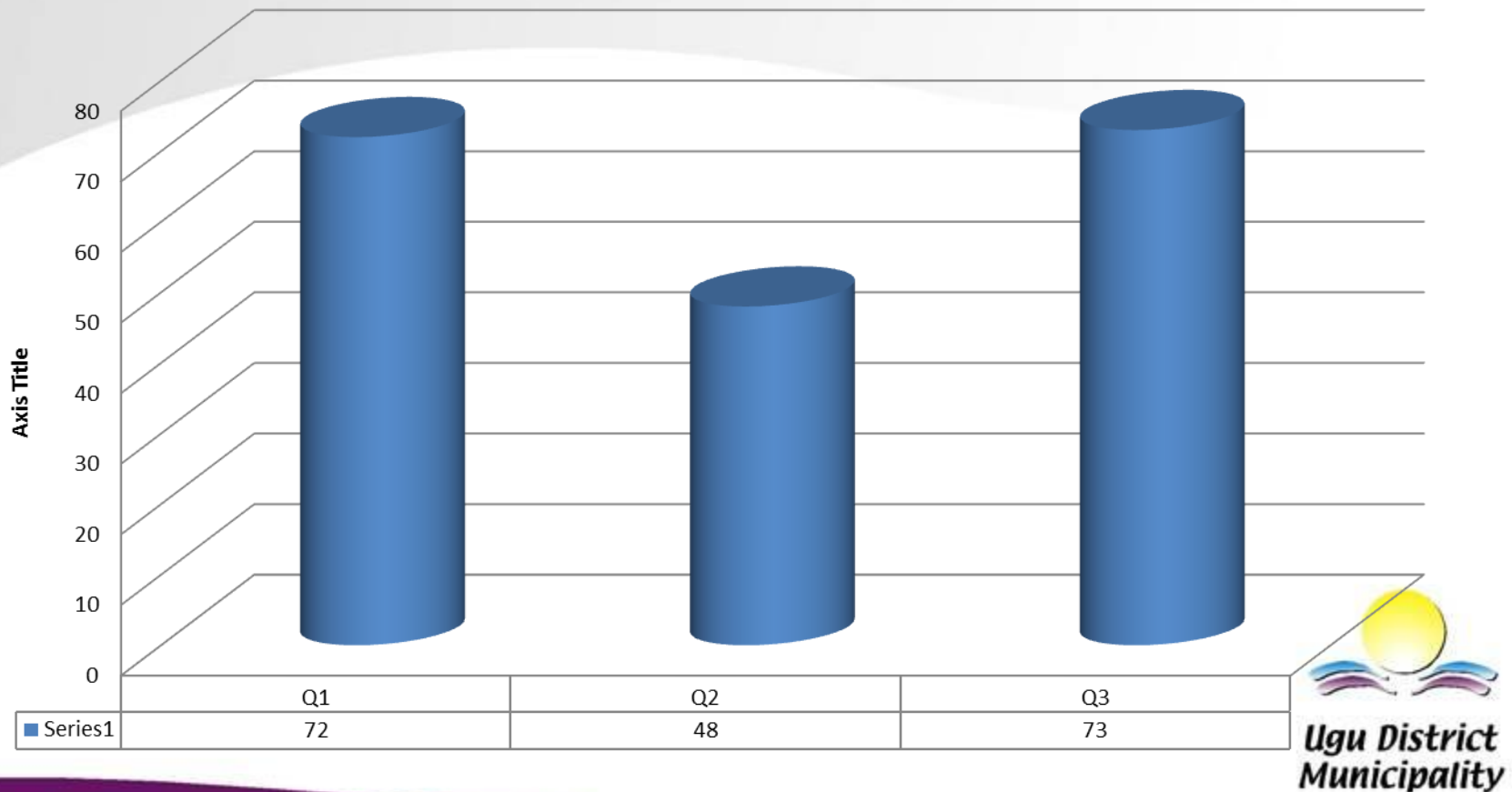


COMMENTS

- Most of Maternal deaths are due to co infection of TB and HIV related illnesses
- Late ANC booking with co-infected mothers
- The district specialists clinical team and the programme Managers are looking at the causes of maternal deaths and providing the necessary technical support to the PHC and hospitals
- On site trainings have been conducted
- OSS structures are involved in disseminating information about early booking and adherence to treatment

MARTENAL CHILD & WOMEN'S HEALTH

Number of infants deaths at public health facilities

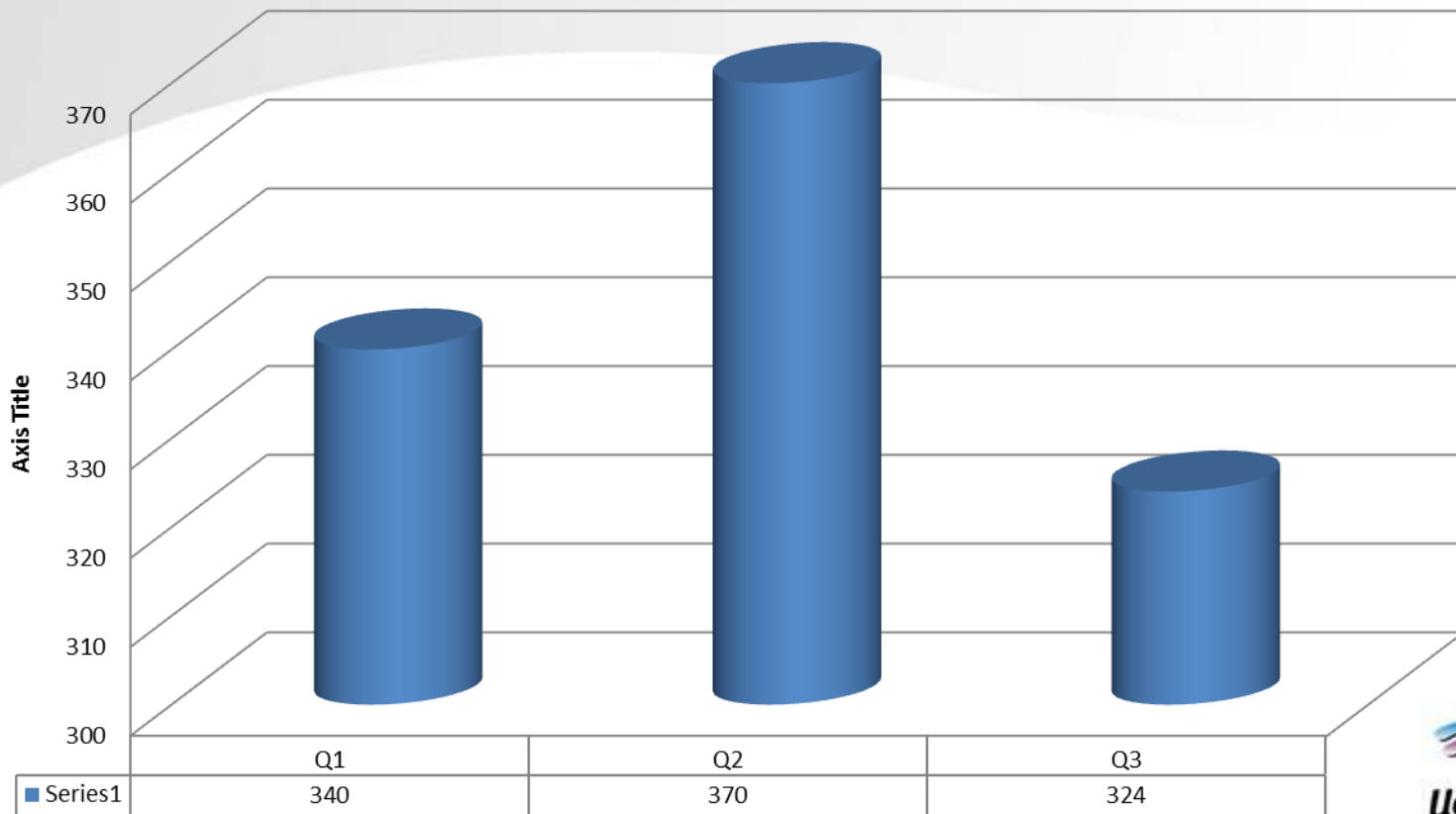


COMMENTS

- Infants deaths are due to severe malnutrition
- It is also due to high rate of pneumonia

MARTENAL CHILD & WOMEN'S HEALTH

Number of deliveries less than 18 years at public health facilities



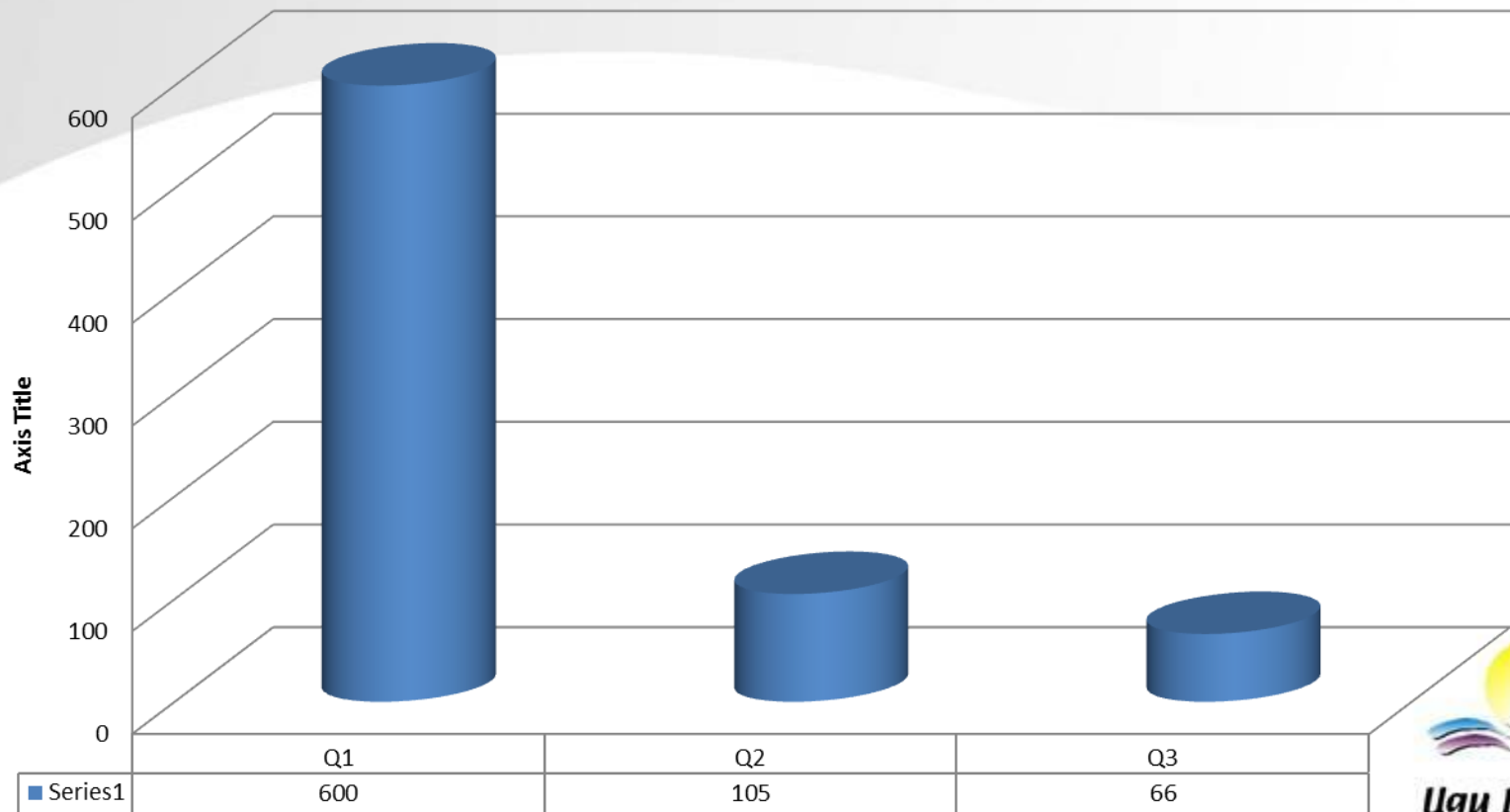
**Ugu District
Municipality**

COMMENTS

- Family planning has been escalated
- Visiting of HTA teams to FET, farms has had a lot of impact in family planning

MARTENAL CHILD & WOMEN'S HEALTH

Number of termination pregnancies performed



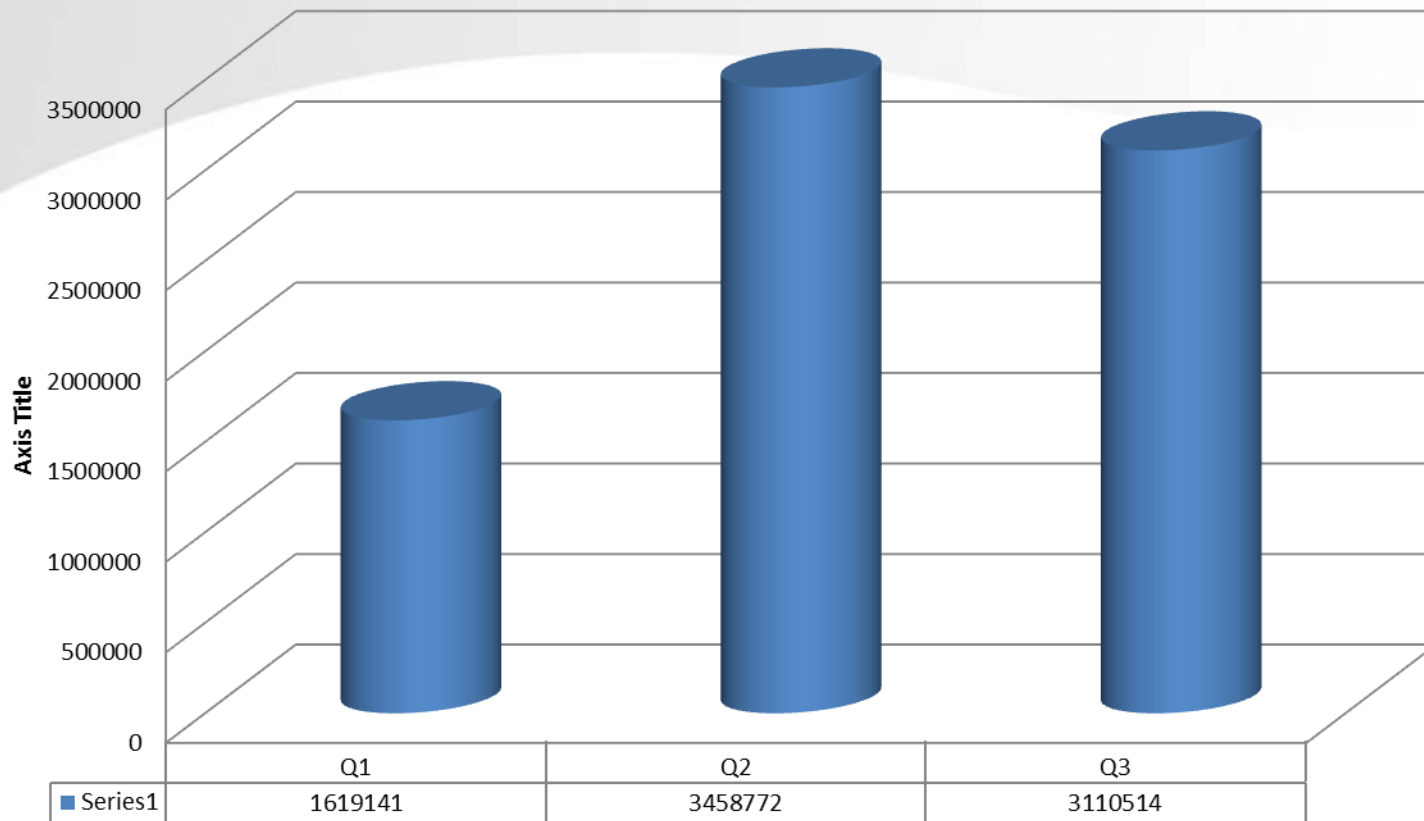
**Ugu District
Municipality**

COMMENTS

- Contract with Marie Stopes has been terminated
- Clients are referred to GJ Crookes
- These statistics are only from public facilities.

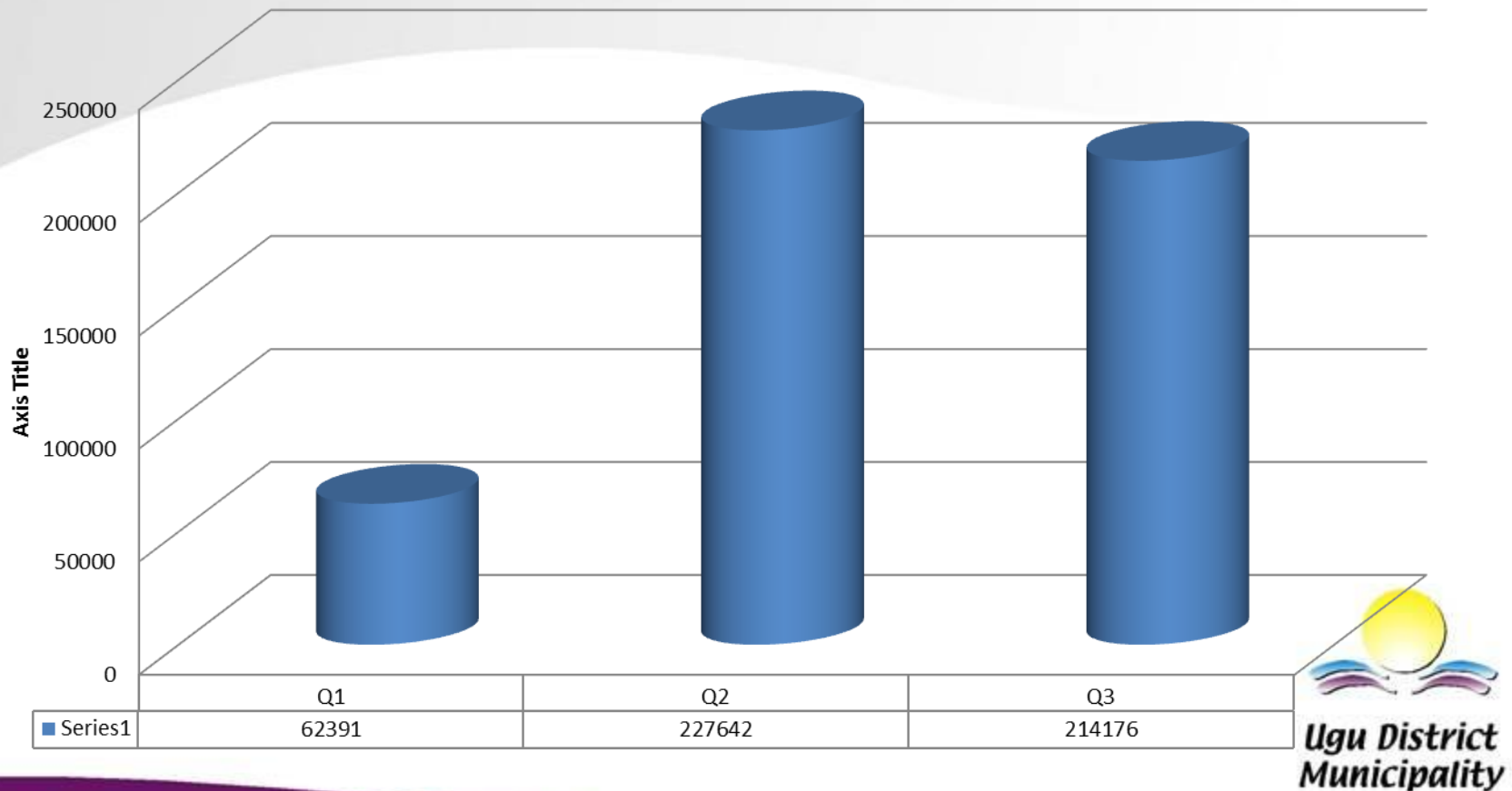
CONDOM DISTRIBUTION

Number of male condoms distributed



CONDOM DISTRIBUTION

Number of female condoms distributed

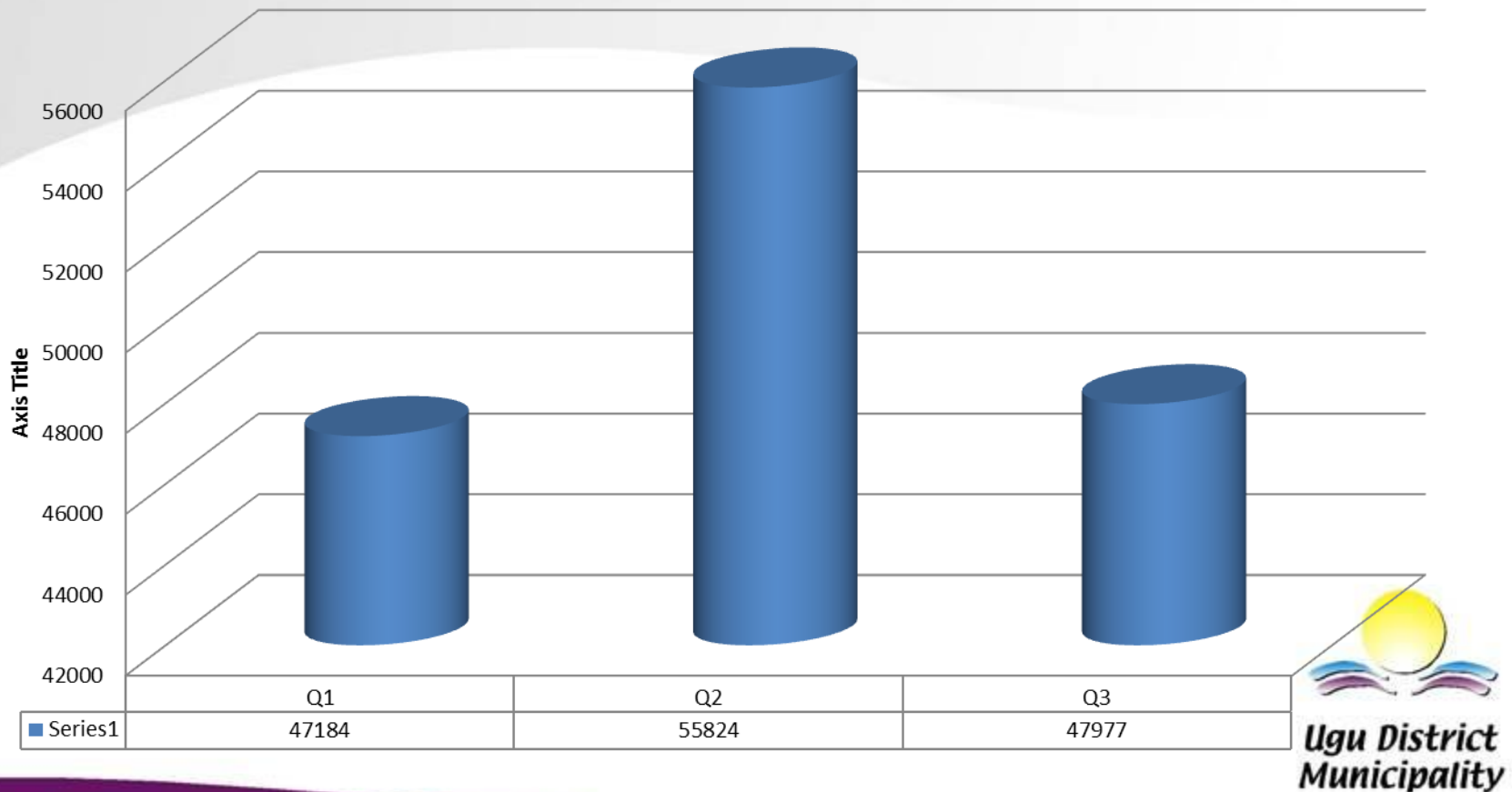


CONDOM DISTRIBUTION

- Targets are not being met by the district however service providers have been appointed. They started in November 2014. HCM and Ezinqoleni are still in a process of being contracted
- FHI(360) –NGO working in the district will also assist with the distribution for the entire district. Working hand in hand with the appointed service providers
- OSS structures are also assisting with condom distribution
- The district is doing well with distribution of female condoms

HIV TESTING & COUNSELLING

Number of new HIV tests carried out

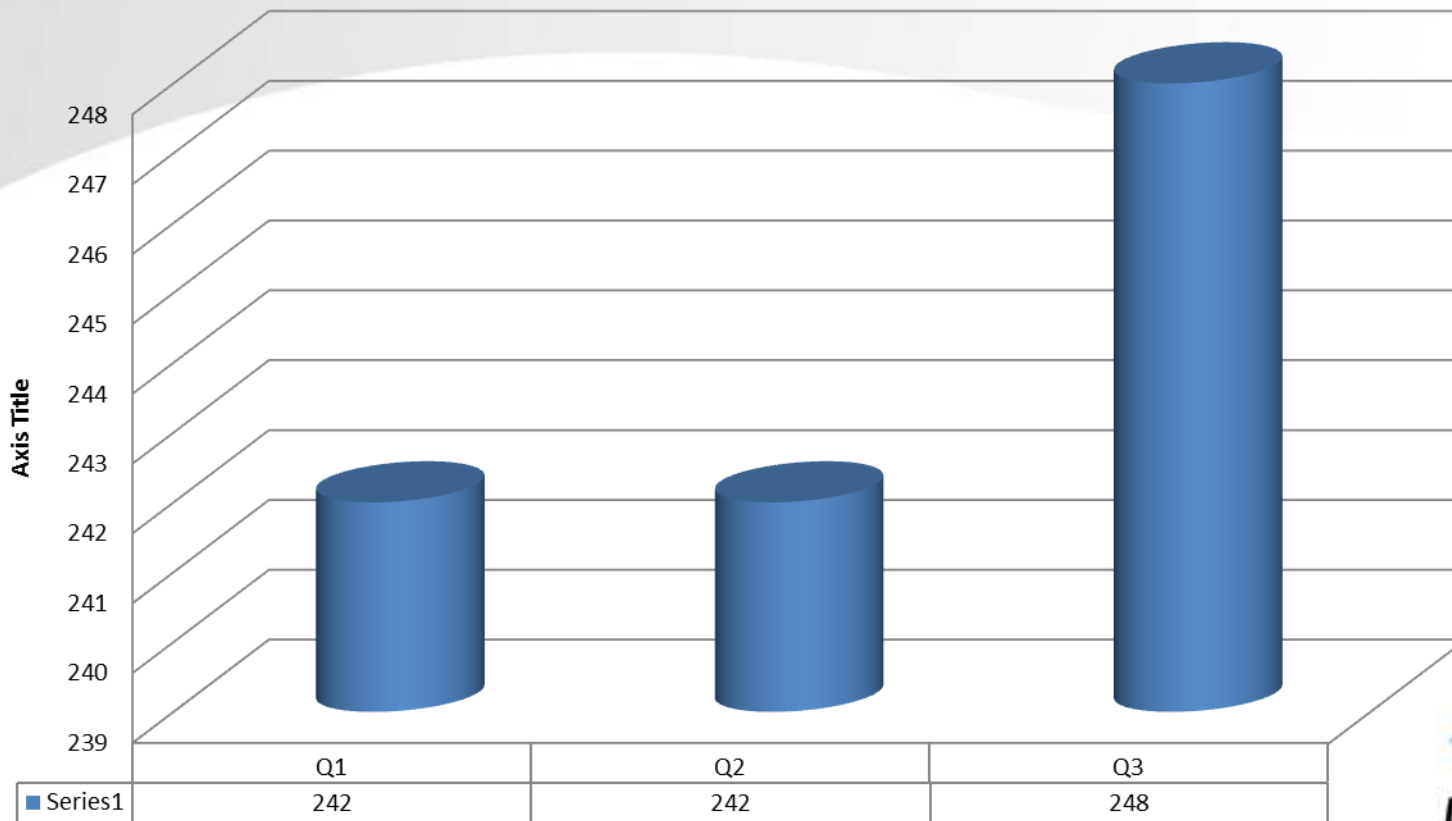


HIV TESTING & COUNSELLING

- There was a decrease in HCT testing due to festive season. However, outreach continues to take place
- The Hlola Manje strategies have improved on HCT. The district continues to do well.
- Also due to impact of OSS

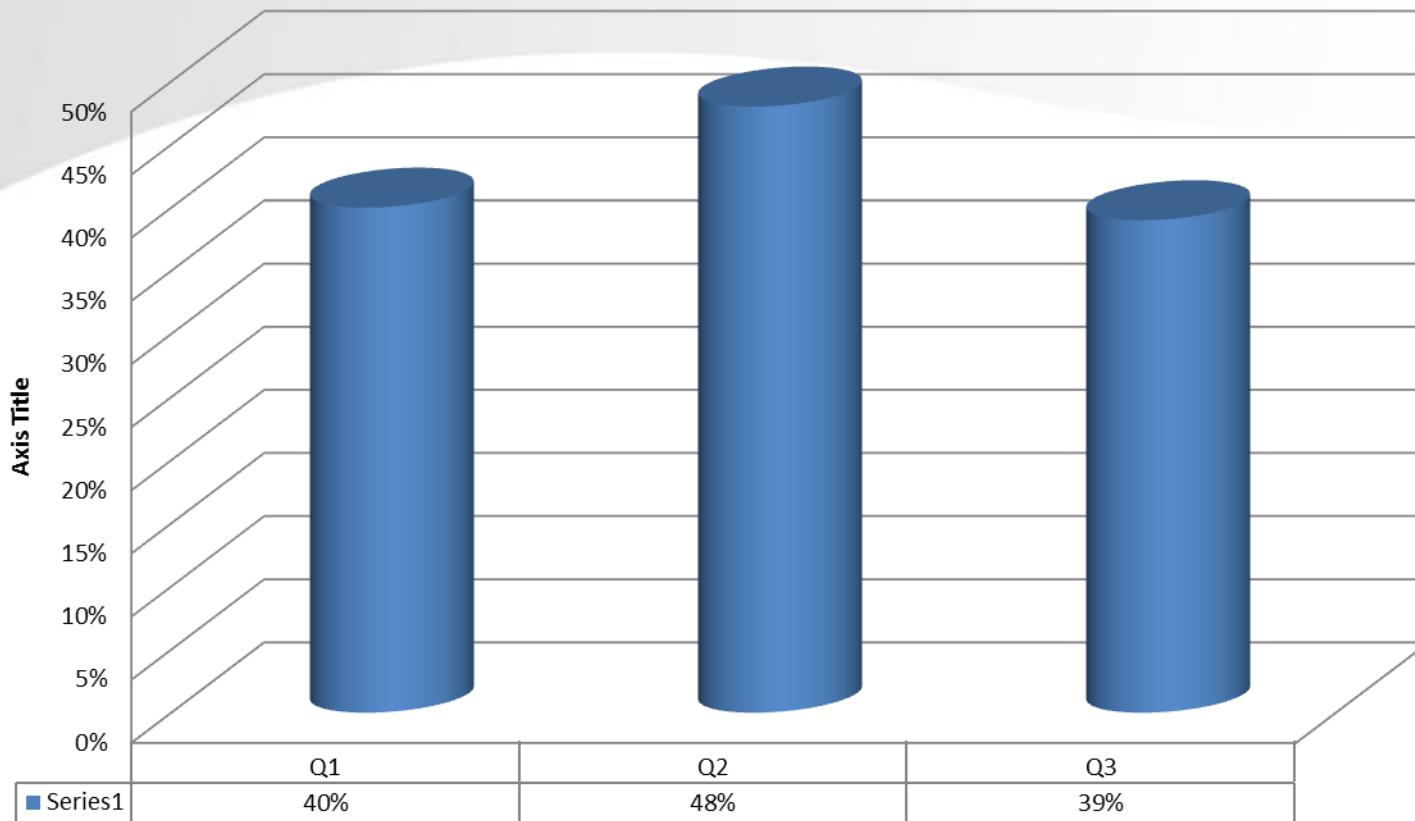
SEXUAL ASSAULTS

Number of new sexual assault cases



SEXUAL ASSAULTS

Children under 12 sexually assaulted rate



SEXUAL ASSAULTS

- The district is faced with exponential increase in the number of sexual assault increase. The district is continuing to conduct campaigns and encouraging communities to report with 72 hours to obtain prophylaxis

ACTIVITIES IN OCT-DEC 2014

- Awareness campaigns on sexual assault conducted in Umzumbe (20 schools),
- Awareness campaigns on drugs, substance abuse, sexual assault in Ezingoleni (special focus on Dwalalesizwe H School)
- Awareness campaign on the practice of Ukuthwala

SEXUAL ASSAULT PLAN

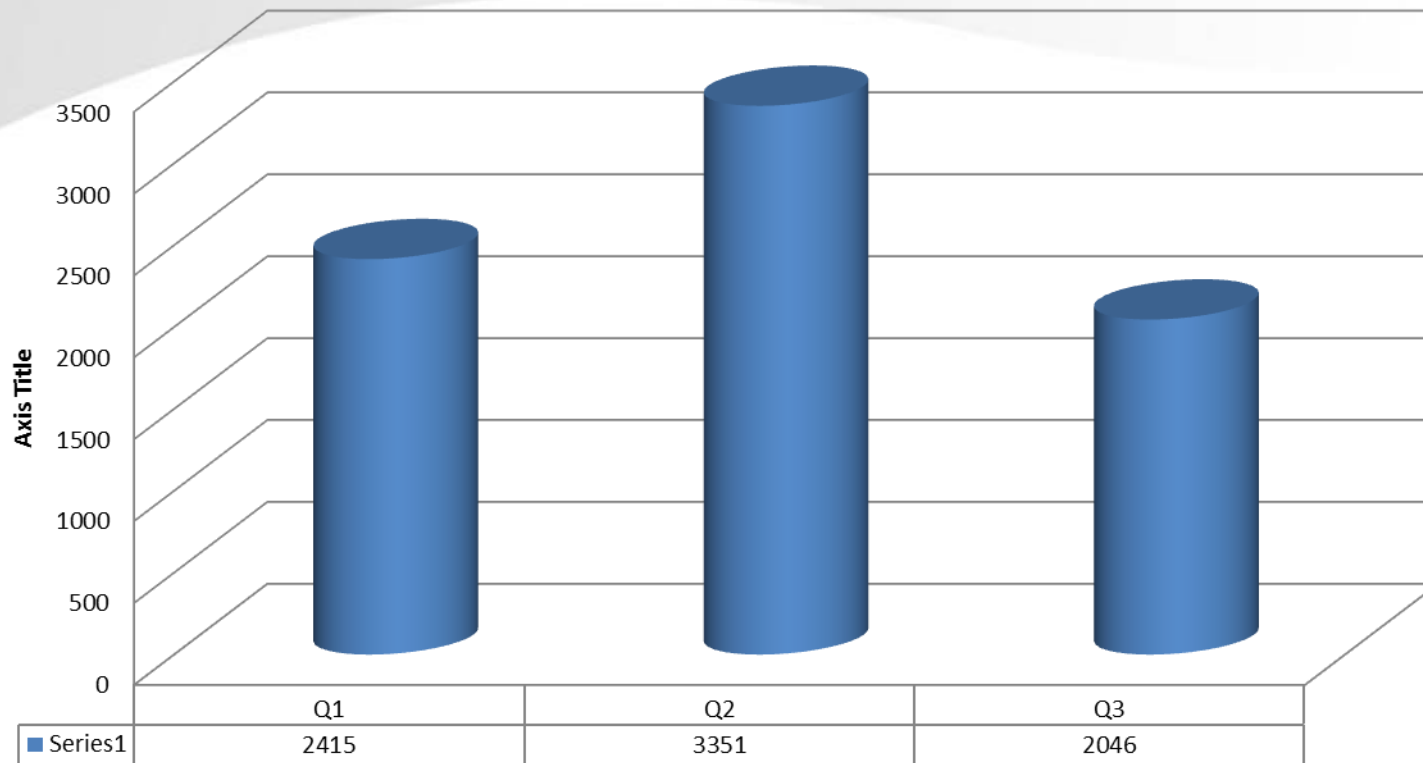
ACTIVITY	TARGET GROUP	TARGET AREA	TIME FRAME	TARGETED NUMBER
Awareness on sexual assault- Ugu Primary Schools Skills Challenge	Learners	All 6 LMs	February – March 2015	1700
Sexual assault awareness in 12 schools	Learners	All 6 LMs	March 2015	2500
Men dialogue on sexual assault in partnership with NPA and Sisonke Gender Justice	Men	Hibiscus Coast Municipality	26 March 2015	100

SEXUAL ASSAULT PLAN

ACTIVITY	TARGET GROUP	TARGET AREA	TIME FRAME	TARGETED NUMBER
Women Empowerment workshop covering sexual assault	Women	All LMs	9 March 2015	800
Awareness on sexual assault- Phelophepha Health Care train	All groups	In Port Shepstone- people attending from different areas	March 2015	1500

MALE MEDICAL CIRCUMCISION

Number of males aged 15-49 undergoing male medical circumcision

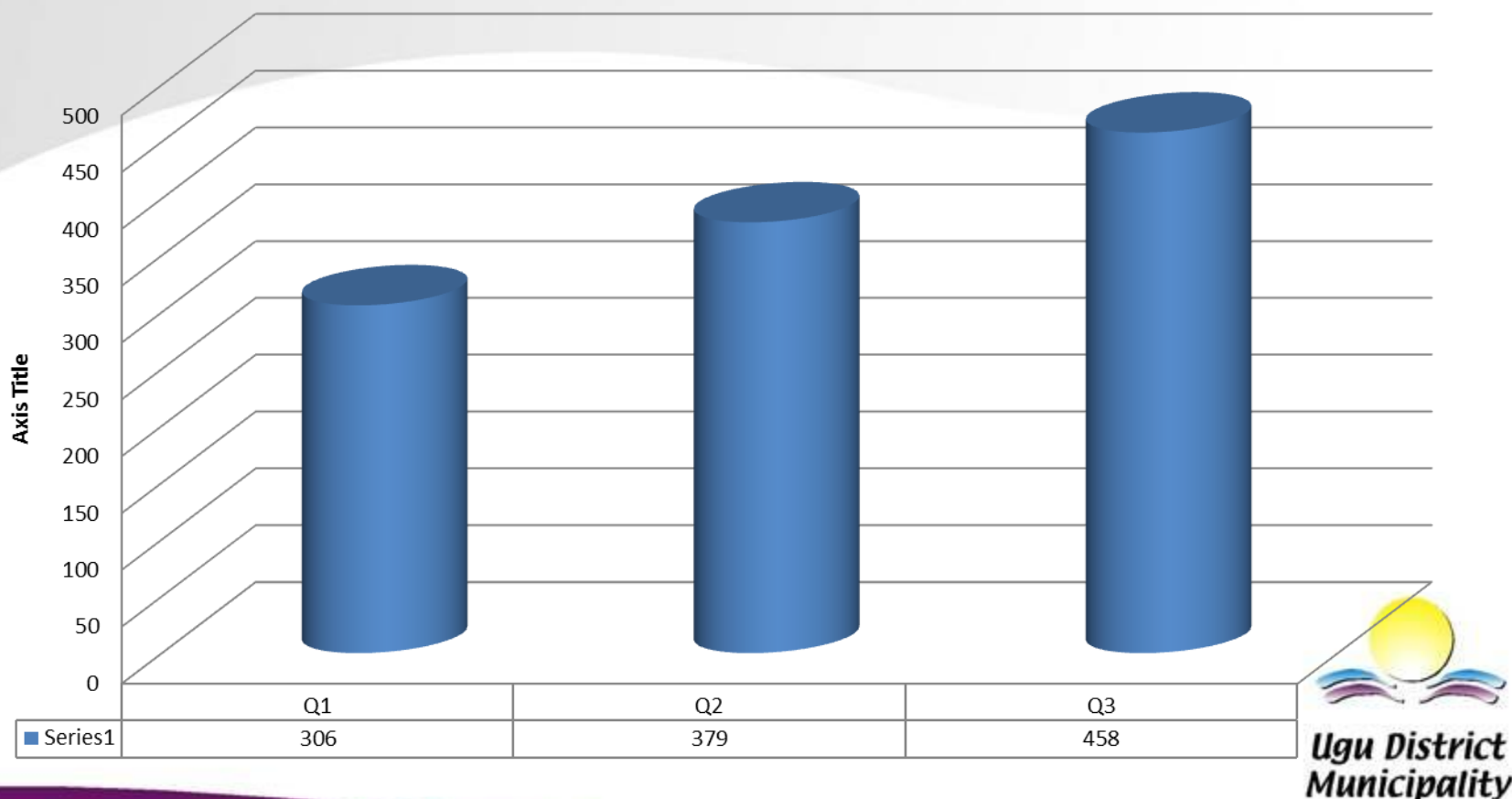


MALE MEDICAL CIRCUMCISION

- The number in the reporting quarter were drastically low in spite of radio and newspaper advertising.
- The district has embarked on back to basics on conducting awareness campaigns which differentiate medical male circumcision to initiation.
- Active door to door campaign to reach the youth out of school is being conducted
- Involvement of AmaKhosi, LMs structures and OSS is also in place in strengthening mobilisation of adult males to accept this programme
- The provincial office has promised a dedicated MMC transport system and MOU with Netcare/private hospitals
- There are statistics in private doctors which is difficult to access.

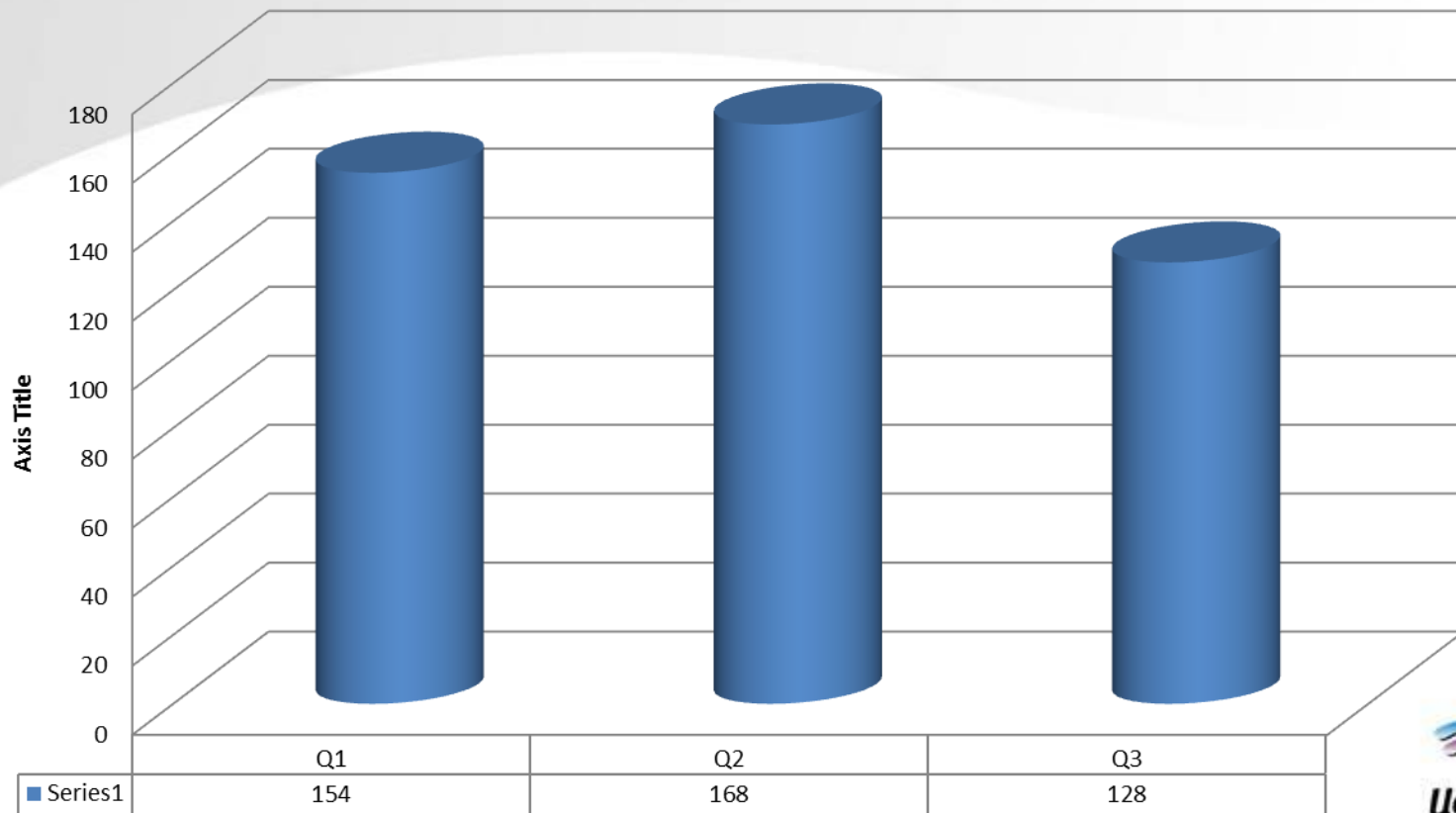
ART LOST TO FOLLOW UP & DEATHS

Number of ART patients de-registered due to loss of follow up



ART LOST TO FOLLOW UP & DEATHS

Number of ART patients de-registered due to death



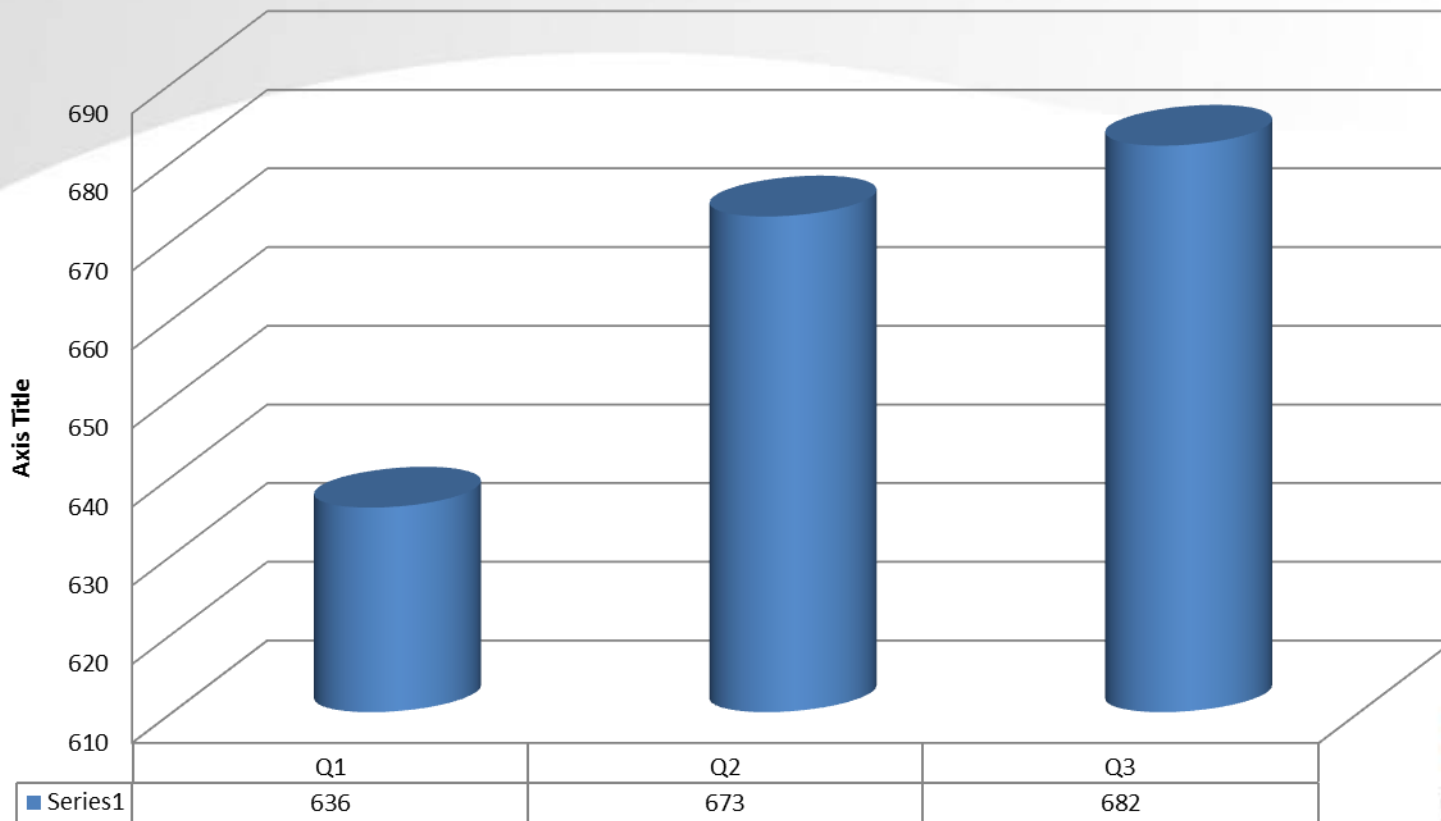
**Ugu District
Municipality**

COMMENTS

- The number of de-registered due to follow up increased. It is also attributed to immigrant workers
- There has been a data clean-up since facilities now are on Phase6 Tier.net
- There is a slight decrease in the number of patients de-registered due to death

TB AND TB/HIV CO-INFECTION

Number of TB/HIV patients started on CPT



DAC FUNCTIONALITY

- DAC still functional
- Meetings sat in all 3 reporting quarters
- DAC receiving on-going support from OTP
- OTP conducted 2 day M&E workshop which will improve the functionality of DAC and reporting
- OTP also conducted trainings for WAC. High Improvement in the functionality of all levels (WAC, LAC and DAC) is expected